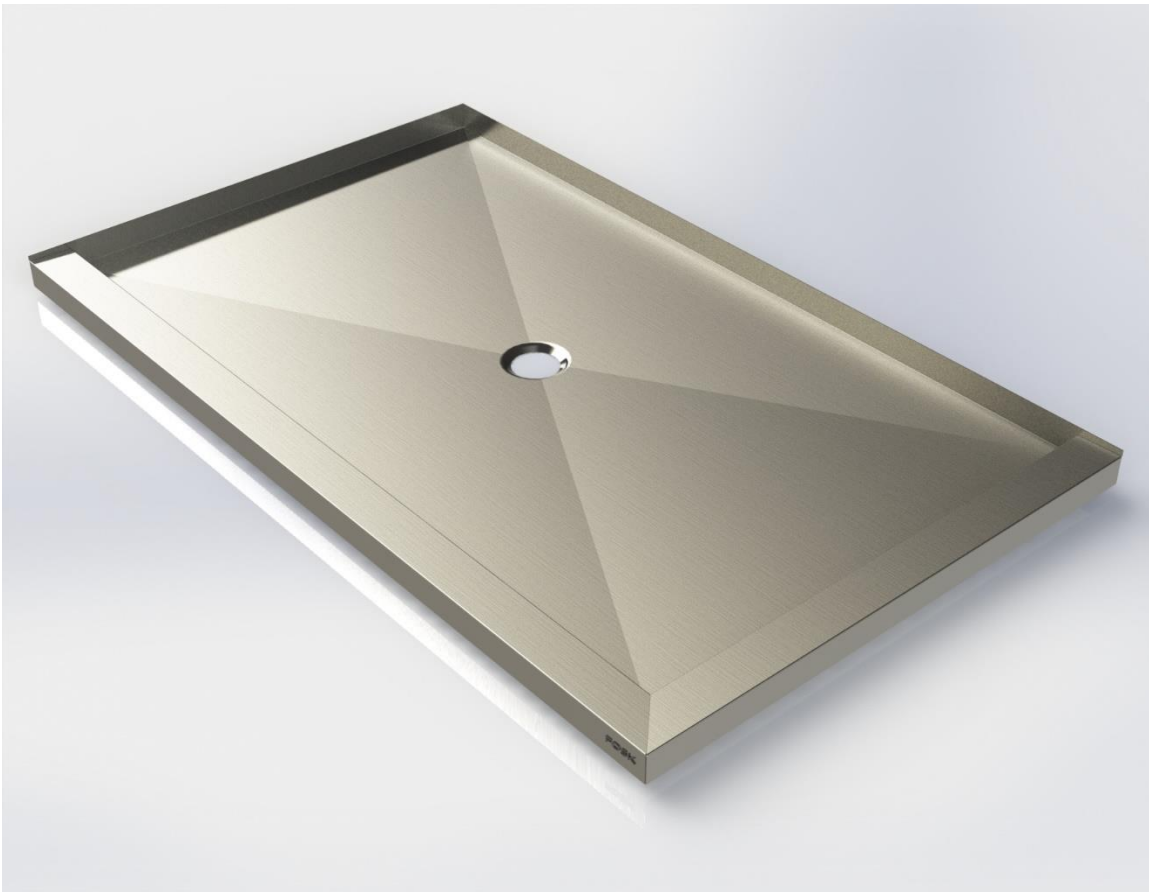


# FOSK®

**Stainless-steel shower base**



See the installation video on our website  
[www.foskproduct.com](http://www.foskproduct.com) under our product, selected  
stainless steel shower base.

## TECHNICAL SHEET

- Basic safety equipment
- Notched trowel 1/2 inch by 1/2 inch
- High polymer cement adhesive. (Flexibility up to 1/8 of thickness)
- \* Strongly recommended
- A level
- Clear silicone tube
- \* For sealing between the sill and the ceramic and to avoid contact with other metals.
- Silicone applicator gun
- Mixing rod for mortar
- Drill for mixing

## Steps to Installation

\* Please read this entire manual before proceeding with the installation\*.

1. Make sure the floor is level where the shower base will be installed.
2. Mark out the area where the base will be installed. The sides with the wall edges must be supported by the studs and the gypsum is installed on top of them, leaving a half-inch space with the bottom. The ceramic tiles join the bottom of the base and are finished with a silicone bead between the base and the tiles.
3. Spread the cement glue with a ½" notched trowel.
4. Install the base by pressing well around the drain and make sure it remains level.
5. Connect the ABS drain with the water return according to the code in your area.
6. Allow the recommended curing time (for cement, adhesive) by the manufacturer before walking on the base.
7. You can now start finishing the shower.

### Installation notes or important

\*Avoid any contact between stainless steel and other metals. If contact occurs, please use a bead (gasket) between the two metals or use a double-sided tape between the two metals

\* Note that if you must drill the base, make sure to use stainless steel hardware and fasteners.



Telephone: 514-418-7059

Email: [info@fosk.ca](mailto:info@fosk.ca)

Website: [www.foskproduct.com](http://www.foskproduct.com)